



Carhartt® Quilted-Flannel-Lined Duck Active Jac. CTSJ140

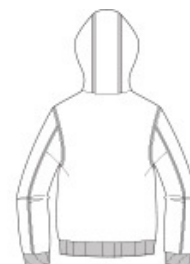


When Old Man Winter and Mother Nature get all riled up, reach for the Duck Active Jac. It can handle what this fearsome two osome dishes out. It's warm, versatile and rugged.

- 12-ounce, firm hand, 100% ring spun cotton duck canvas
- Water-repellent and wind-resistant
- Quilted-flannel lining in body, quilted-nylon lining in sleeves
- Attached quilted-flannel-lined three-piece hood with draw cord closure
- Full-length brass front zipper
- Two interior pockets: one zippered, one hook and loop
- Two large hand pockets
- Locker loop
- Rib knit cuffs and waistband
- Carhartt-strong, triple-stitched main seams
- Carhartt label sewn on left pocket
- Loose fit



front

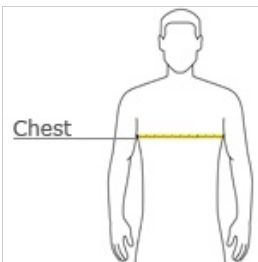


back

CARE INSTRUCTIONS

Color Black: Machine wash cold with like colors, Do not bleach, Tumble dry low remove promptly, Steam iron shell only, All colors except Black: Machine wash warm with like colors, Do not bleach, Tumble dry medium remove promptly, Steam iron shell only.

HOW TO MEASURE



CHEST WIDTH

Measure under the arm and around the fullest part of the chest with arms down, keeping tape horizontal.

SIZE CHART

	S	M	L	XL	2XL	3XL	4XL	5XL
Chest	34-36	38-40	42-44	46-48	50-52	54-56	58-60	62-64

COLOR INFORMATION



Black
PMS BLACK C



Carhartt Brown
PMS 463C



Dark Navy
PMS 533C



Gravel
PMS 11C